



**EASTLANDS**

# RESPONSE TO URBAN VIOLENCE



## SEXUAL AND GENDER BASED VIOLENCE (SGBV) RESPONSE PROGRAM

Since 2008, MSF has been providing sexual and reproductive health services (SRH) and comprehensive medical care to survivors of sexual and gender-based violence (SGBV) in Eastlands. Currently, MSF is offering this service through the MSF Lavender House clinic and in Ministry of Health (MoH) public health facilities with **Tumaini Clinics** in **Mama Lucy Kibaki Hospital, Kenyatta University Teaching, Referral and Research Hospital, Mama Margaret Uhuru Hospital, and Dandora II Health Centre** in close collaboration with MOH teams. Services provided at the MSF Lavender House clinic (along Juja Road) include reproductive health services including but not limited to:



Comprehensive medical and psychosocial care for SGBV survivors

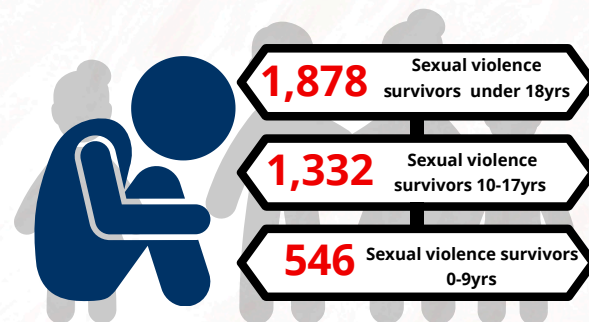


A toll-free hotline number for providing emergency medical advice to survivors



Referral to secondary or tertiary hospitals for those needing advanced care

MSF lends to the legal process for survivors through collection of forensic samples, filling documents, and providing expert witness in courts. Protection and shelter services are provided through creating links with other actors. A community mobilization team raises awareness on sexual violence and creates links with the community.



**9,330**  
Sexual and Reproductive Health consultations



**1,188**  
New Mental Health consultations



# YOUTH CENTERED SERVICES IN DANDORA

MSF has been offering youth-friendly services in Dandora II Health Center, a public health facility and in medical outreach clinics to improve access to youth friendly services for youth aged 10-24yrs and key population directly within the community. The youth-centered activities have been designed together with the Dandora youth, key stakeholders in the community, and with the MoH, and is run in participation with the youth. The clinic and medical outreach clinics provides packages of both medical and psycho-social activities accompanied by recreational activities.

Focus of the medical component is SRH i.e. managing sexually transmitted infections, contraception, pregnancy testing, antenatal-care for teenage expectant mothers, HIV testing and prevention services with linkage to care, SGBV, HPV vaccination, general consultations, mental health-psychosocial counselling and referral.

Social services include mentorship and educative services on life and social skills, health education and outreach activities. Targeted activities on dedicated days in the clinic for the most vulnerable groups (Domestic Workers, PLWDs and People living on the street) are done in collaboration with different actors including MoH community health volunteers



## WHO WE ARE

Founded in 1971, Médecins Sans Frontières (MSF), also known as Doctors Without Borders, is an international, independent medical humanitarian organisation that provides emergency assistance to people affected by armed conflict, epidemics, exclusion from healthcare, and natural disasters in more than 70 countries worldwide. MSF delivers care based solely on need, without discrimination based on tribe, race, religion, gender, or political affiliation. Our work is guided by medical ethics and the principles of neutrality and impartiality.

MSF has been working in Kenya since 1987, delivering a wide range of medical services, including treatment for HIV, tuberculosis, and non-communicable diseases; adolescent- and youth-friendly health services; healthcare for refugees; and medical and psychosocial support for survivors of sexual violence. MSF also responds to multiple emergencies in the country, such as disease outbreaks and the health impacts of climate change.

MSF operates in Nairobi, Homa Bay, Garissa (including Dadaab Refugee Camp), and Mombasa, while responding to emergencies in various regions across Kenya. In recognition of its humanitarian work,

**MSF was awarded the Nobel Peace Prize in 1999.**

## EMERGENCIES RESPONSE PROGRAM

Activities include:



**24/7 medical emergency call centre** (Toll-free hotline)

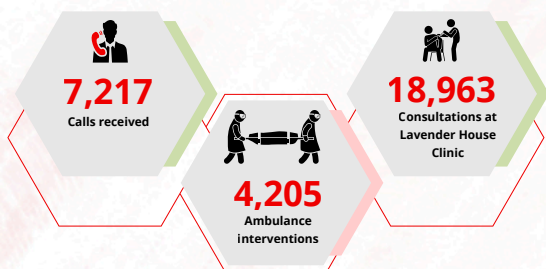


MSF also runs a **trauma room** at MSF's Lavender House clinic.

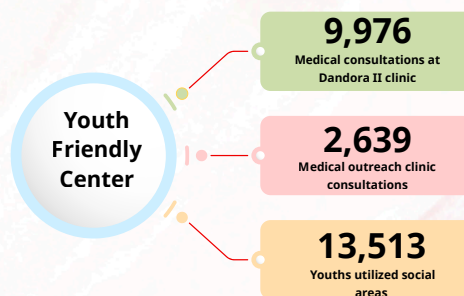


Pre-hospital ambulances available 24/7 for dispatch to respond to calls directly from the community in **Mathare, Eastleigh, Huruma-City carton, Kiambu Majengo and Kiamaiko**, with possibility of enroute medical resuscitation and stabilization.

**Referrals** to Ministry of health tertiary and secondary hospitals. MSF's medical emergency setup includes preparedness to respond to mass casualty incidents like collapsed building, violence, fire outbreaks, road traffic accidents, or disease outbreaks like cholera among others across Nairobi



Call Center and ambulance data 2025



Youth Friendly Center data 2025